

QUICK SPECIFICATIONS

- Overview:**
- Operator has total, full-variation control of convection and conduction heat transfer via a patented "Open Chamber Roasting" fluid-bed 6kg air-roasting chamber.
 - All electric. No fuel or afterburner needed.
 - Extremely low emissions. Environmentally smart.
 - Clean, consistent roast every time.

CAPACITY/OUTPUT

- Batch Size:** Max 6kg roasting capacity (13 lbs of green beans)
- Batch Time:** 8-12 minutes (light to dark roast)
- Output:** Max 50 lbs/hour; 400 lbs/day (based on 8-hour day)

DATA LOGGING

- Internal:** 5 real-time graphs: bean temp, heater temp, RoR bean temp, RoR heater temp, and saved profile curve line
- External:** Bluetooth, USB connectivity, Artisan/Cropster compatible

CONTROL POINTS

- Integrated touchscreen control panel
- Presetting profile parameters
- Fast-reacting thermocouples
- Quick-response heat transfer
- Speed controller to adjust bean lifting height during roasting

ELECTRICAL REQUIREMENTS

- 3-Phase:** 240 V/60 Hz, 24.22 kW, 58 Amps – OR –
480 V/60 Hz, 24.22 KW, 29 Amps

COMPONENTS

- Air Flow:** High-efficiency 3kW heater blower
- Cooling:** Optional 30-40 second water dousing system for high-speed bean cooling
- Extraction:** Centrifugal 2.6 kW extraction fan immediately moves dust, smoke, and chaff from roast chamber
- Heating:** 18 kW Nichrome plated electrical spiral elements
- Roast Chamber:** Stainless steel construction, durable, easy cleaning



6KG AIR-MOTION ROASTER

\$37,500

Take advantage of
our private,
competitive
lending program,
AMR Approved!

Visit
www.air-motionroastersusa.com/financing/

Info:
855.579.6400

sales@air-motionroastersusa.com



www.air-motionroastersusa.com

DIMENSIONS AND WEIGHT: 6KG ROASTER COMPONENTS

COMPONENT	RAW UNCRATED WEIGHT	DIMENSIONS
Cyclone	276 LBS	87.4" x 39.4" x 59" (7.3' x 3.3' x 4.9')
Cooling Tray	77 LBS	16.5" x 27.6" x 27.6" (1.4' x 2.3' x 2.3')
Roast Chamber	231 LBS	41.7" x 25.2" x 32.7" (3.5' x 2.1' x 2.7')
TOTAL	584 LBS	

DIMENSIONS AND WEIGHT: 6KG ROASTER CRATING

CRATE	CRATED WEIGHT	CRATE DIMENSIONS
Crate #1	551 LBS	67" x 31" x 91" (6' x 2.5' x 7.5')
Crate #2	322 LBS	37" x 29" x 49" (3' x 2.5' x 4')
TOTAL	873 LBS	

6KG CYCLONE VENTING DIAMETER

Exit Pipe Diameter: 247 mm

Outside Diameter of aluminum flex pipe: 250 mm (3mm wall thickness)

Purchase ducting from **Nordfab** or **Selkirk**.

MAINTENANCE

The only maintenance required is the emptying of the Chaff Collector Bucket every couple of days depending on the frequency of roasting and the wiping down of the Roast Chamber with a wet cloth after completion of roasting schedule for the day.

REPLACEMENT PARTS (IF NEEDED)

The only parts that may need to be replaced due to natural wear and tear:

- Blower fan
- Element bank

Contact Air-Motion Roasters USA to purchase replacement parts.

DECIBEL READING

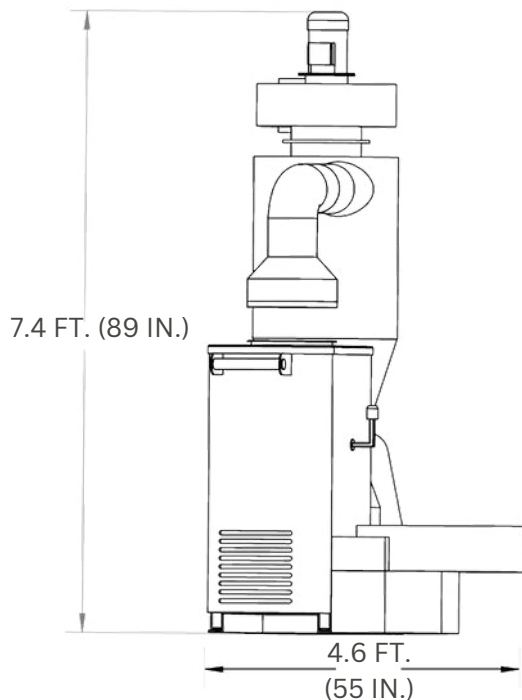
85 dB

CERTIFICATIONS

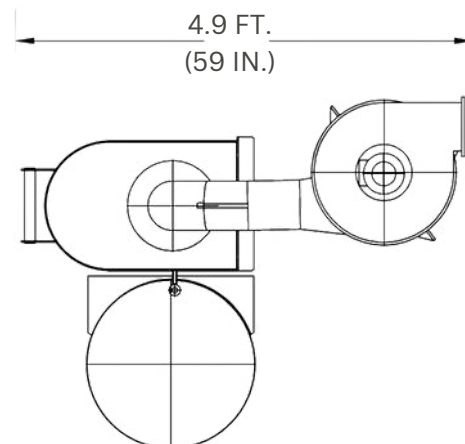
CE, UL, IEC (International Electrotechnical Commission)

6KG ROASTER LAYOUT

FRONT VIEW



TOP VIEW



SERVICING

No servicing is required other than the Maintenance Schedule as listed.

WARRANTY

AMR provides a 1-year warranty on all moving parts.

EMISSION TESTING

Emission testing report included in User Manual.

REQUIRED CLEARANCES

Position roaster at least 24" from walls or other equipment, and allow for at least 48" in front of roaster for user operation.

